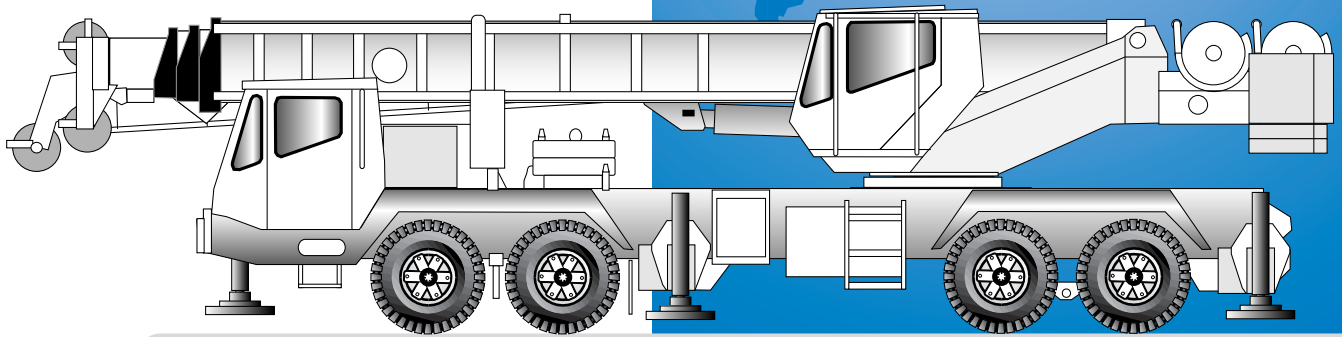




GROVE[®]
CRANE

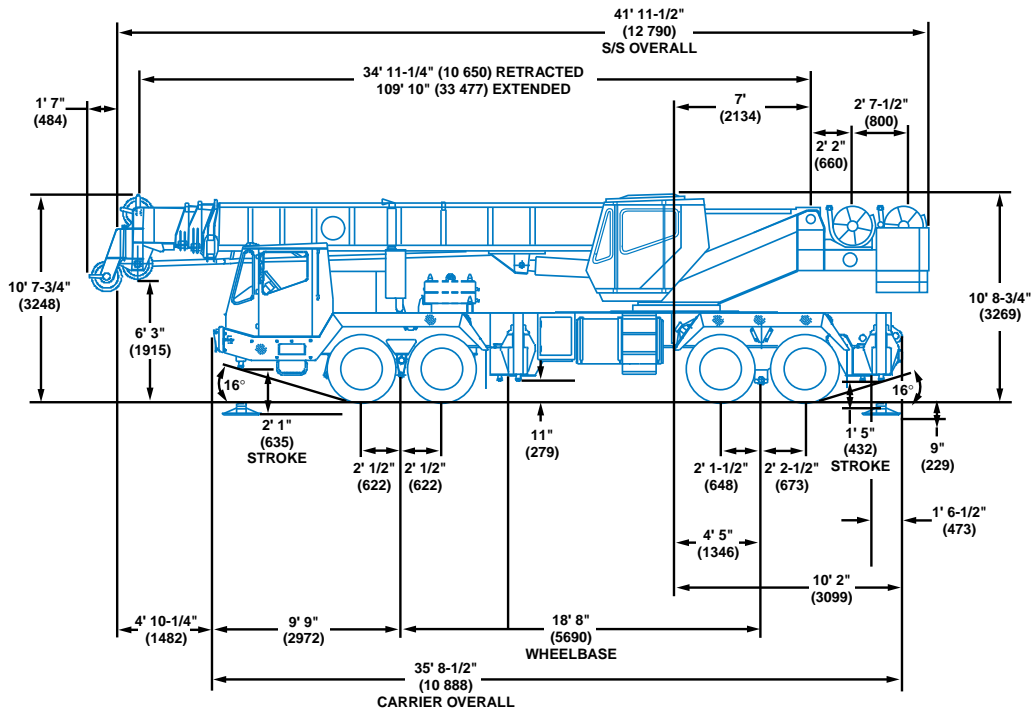
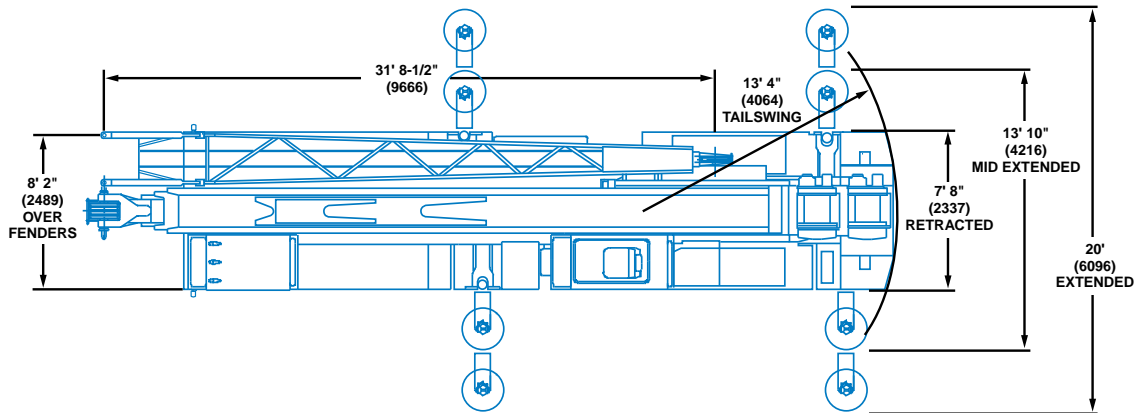
A GROVE WORLDWIDE COMPANY

TMS700B



Carrier-Mounted Hydraulic Crane

Dimensions



Note: () Reference dimensions in mm

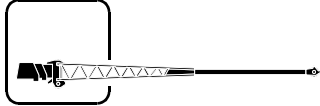
ALLOWABLE WEIGHTS	FRONT	REAR	GVW
	39,504 lbs.	49,680 lbs.	89,184 lbs.
	FRONT	REAR	GVW
Base machine with 110 ft. (33.5 m) boom	28,588 lbs. (12 968 kg)	38,174 lbs. (17 316 kg)	66,762 lbs. (30 283 kg)
32 - 56 ft. (9.8 - 17.1 m) tele swingaway	2,035 lbs. (923 kg)	300 lbs. (136 kg)	2,335 lbs. (1059 kg)
32 ft. (9.8 m) fixed swingaway	1,448 lbs. (657 kg)	169 lbs. (77 kg)	1,617 lbs. (733 kg)
Main and auxiliary hoist w/rope	(194) lbs. [(88 kg)]	685 lbs. (311 kg)	491 lbs. (223 kg)
Auxiliary boom nose	258 lbs. (117 kg)	(115) lbs. [(52 kg)]	143 lbs. (65 kg)
50 ton block	1,525 lbs. (692 kg)	(303) lbs. [(137 kg)]	1,222 lbs. (554 kg)
15 ton block	474 lbs. (215 kg)	(94) lbs. [(43 kg)]	380 lbs. (172 kg)
10 ton ball	699 lbs. (317 kg)	(139) lbs. [(63 kg)]	560 lbs. (254 kg)
7,800 lbs. (3538 kg) cwt. on s/s	(2,926) lbs. [(1327 kg)]	10,726 lbs. (4865 kg)	7,800 lbs. (354 kg)
7,800 lbs. (3538 kg) cwt. on carrier	6,704 lbs. (3041 kg)	1,096 lbs. (497 kg)	7,800 lbs. (354 kg)
3,900 lbs. (1769 kg) cwt. on carrier/3,900 lbs. (1769 kg) on s/s	1,889 lbs. (857 kg)	5,911 lbs. (2681 kg)	7,800 lbs. (354 kg)

Turning Radius 43' 9" (13 335 mm)

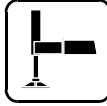
Working Range



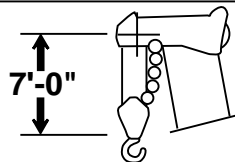
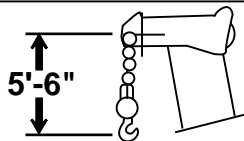
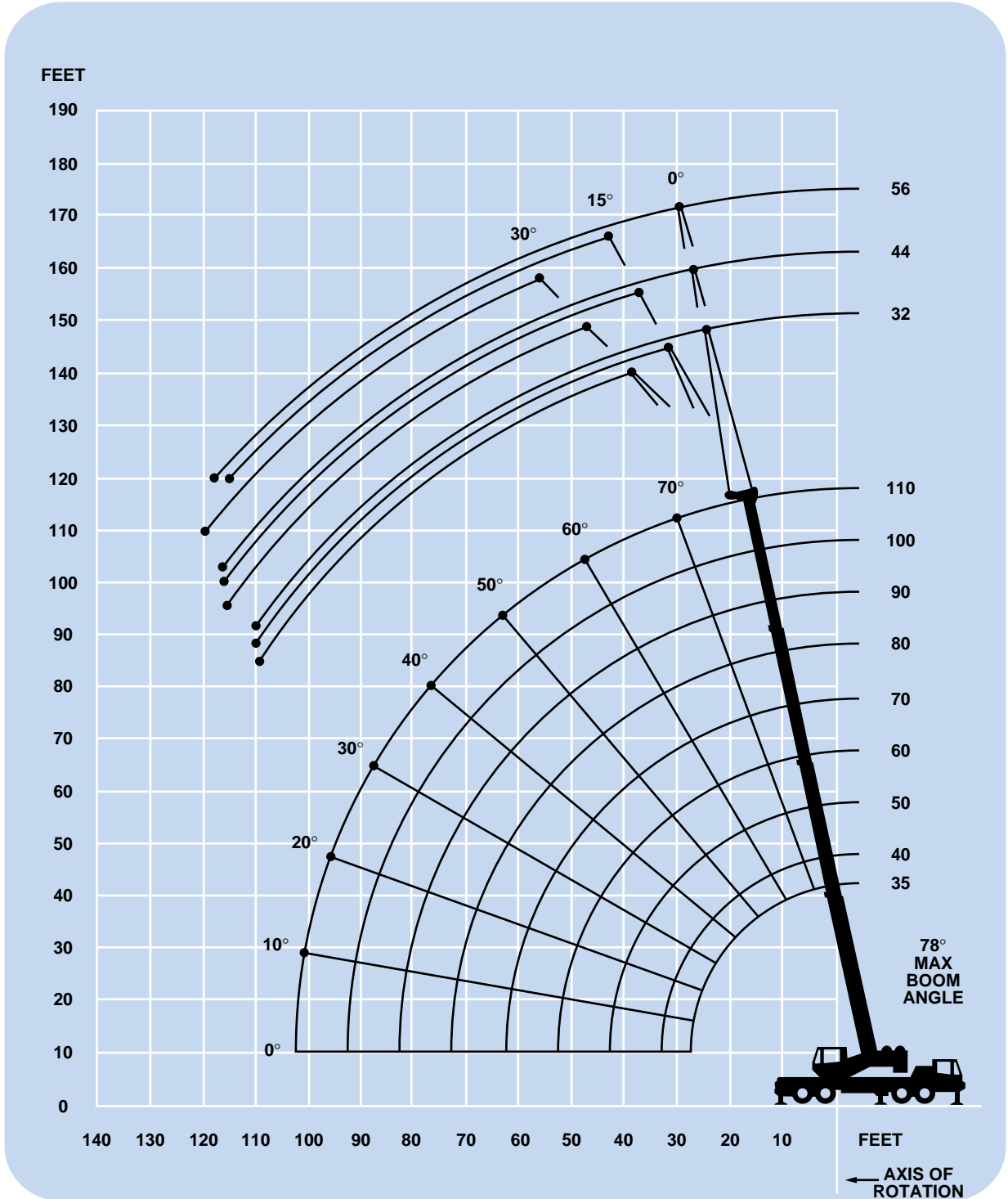
35 - 110 ft.
(10.6 - 33.5 m)



32 - 44 - 56 ft.
(9.8 - 13.4 - 17.1 m)



360°



DIMENSIONS ARE FOR LARGEST GROVE FURNISHED HOOK BLOCK AND HEADACHE BALL, WITH ANTI-TWO BLOCK ACTIVATED.



35 - 110 ft.
(10.6 - 33.5 m)



3,900 lbs.
(1769 kg)



100%



Over Rear



Pounds

(Feet)	35	40	50	*60	70	80	90	100	110
10	80,000 (66)	68,000 (69.5)	58,150 (74)						
12	67,400 (62)	63,800 (66)	55,450 (71.5)	44,600 (75)					
15	58,050 (56)	54,700 (61)	48,050 (67.5)	42,250 (71.5)	35,600 (74.5)	33,000 (77)			
20	44,950 (44.5)	43,000 (52)	39,400 (61)	33,600 (66.5)	30,500 (70.5)	28,000 (73.5)	25,500 (75.5)	23,300 (77.5)	
25	35,200 (28.5)	34,850 (41.5)	32,400 (54)	27,750 (61)	25,200 (66)	23,800 (69.5)	22,000 (72)	20,400 (74.5)	18,500 (76)
30		27,850 (27)	27,150 (46)	23,350 (55)	21,100 (61)	20,400 (65.5)	19,300 (68.5)	17,550 (71.5)	15,750 (73.5)
35			22,250 (36.5)	20,000 (49)	18,050 (56)	17,400 (61.5)	16,400 (65)	15,200 (68)	13,650 (70.5)
40			18,450 (24)	17,250 (41.5)	15,650 (50.5)	15,050 (57)	14,150 (61.5)	13,300 (65)	12,000 (68)
45				15,000 (33)	13,600 (45)	13,200 (52.5)	12,350 (57.5)	11,550 (61.5)	10,600 (65)
50				12,750 (21.5)	11,950 (38.5)	11,600 (47.5)	10,850 (53.5)	10,100 (58.5)	9,500 (62)
55					10,500 (31)	10,300 (42)	9,630 (49.5)	8,950 (54.5)	8,470 (58.5)
60					9,300 (20)	9,130 (36)	8,570 (45)	7,950 (51)	7,500 (55.5)
65						8,120 (29)	7,640 (40)	7,080 (47)	6,670 (52)
70						7,230 (19)	6,800 (34)	6,330 (42.5)	5,940 (48.5)
75							6,060 (27.5)	5,670 (38)	5,300 (45)
80							5,400 (18)	5,080 (32.5)	4,740 (40.5)
85								4,540 (26)	4,230 (36)
90								4,030 (17)	3,780 (31)
95									3,370 (25)
100									2,990 (16)
Minimum boom angle (deg.) for indicated length (no load)									0
Maximum boom length (ft.) at 0 degree boom angle (no load)									110

NOTE: () Boom angles are in degrees.

Boom Angle	35	40	50	*60	70	80	90	100	110
0°	15,500 (27.8)	12,240 (33)	7,860 (43)	4,970 (52.8)	3,670 (63)	2,710 (73)	1,960 (83)	1,360 (93)	880 (102.8)

NOTE: () Reference radii in feet.

*60 ft. boom length is with inner-mid extended and outer-mid & fly retracted.

A6-829-009687B



35 - 110 ft.
(10.6 - 33.5 m)



3,900 lbs.
(1769 kg)



100%



360°



Pounds

(Feet)	35	40	50	*60	70	80	90	100	110
10	80,000 (66)	68,000 (69.5)	58,150 (74)						
12	67,400 (62)	63,800 (66)	55,450 (71.5)	44,600 (75)					
15	58,050 (56)	54,700 (61)	48,050 (67.5)	42,250 (71.5)	35,600 (74.5)	33,000 (77)			
20	44,950 (44.5)	43,000 (52)	39,400 (61)	33,600 (66.5)	30,500 (70.5)	28,000 (73.5)	25,500 (75.5)	23,300 (77.5)	
25	35,050 (28.5)	34,550 (41.5)	32,400 (54)	27,750 (61)	25,200 (66)	23,800 (69.5)	22,000 (72)	20,400 (74.5)	18,500 (76)
30		25,800 (27)	25,200 (46)	23,350 (55)	21,100 (61)	20,400 (65.5)	19,300 (68.5)	17,550 (71.5)	15,750 (73.5)
35			19,400 (36.5)	19,000 (49)	18,050 (56)	17,400 (61.5)	16,400 (65)	15,200 (68)	13,650 (70.5)
40			15,150 (24)	14,950 (41.5)	15,650 (50.5)	15,050 (57)	14,150 (61.5)	13,300 (65)	12,000 (68)
45				11,500 (33)	12,550 (45)	13,050 (52.5)	12,350 (57.5)	11,550 (61.5)	10,600 (65)
50				8,990 (21.5)	10,050 (38.5)	10,550 (47.5)	10,850 (53.5)	10,100 (58.5)	9,500 (62)
55					8,140 (31)	8,610 (42)	9,120 (49.5)	8,950 (54.5)	8,470 (58.5)
60					6,590 (20)	7,050 (36)	7,540 (45)	7,860 (51)	7,500 (55.5)
65						5,770 (29)	6,240 (40)	6,570 (47)	6,670 (52)
70						4,700 (19)	5,160 (34)	5,500 (42.5)	5,770 (48.5)
75							4,240 (27.5)	4,600 (38)	4,860 (45)
80							3,460 (18)	3,820 (32.5)	4,080 (40.5)
85								3,150 (26)	3,400 (36)
90								2,560 (17)	2,810 (31)
95									2,280 (25)
100									1,810 (16)
Minimum boom angle (deg.) for indicated length (no load)									
									0
Maximum boom length (ft.) at 0 degree boom angle (no load)									
									110

NOTE: () Boom angles are in degrees.

Boom Angle	35	40	50	*60	70	80	90	100	110
0°	15,500 (27.8)	12,240 (33)	7,860 (43)	4,970 (52.8)	3,670 (63)	2,710 (73)	1,960 (83)	1,360 (93)	880 (102.8)

NOTE: () Reference radii in feet.

*60 ft. boom length is with inner-mid extended and outer-mid & fly retracted.

A6-829-009687B



35 - 110 ft.
(10.6 - 33.5 m)



32 - 56 ft.
(9.8 - 17.1 m)



3,900 lbs.
(1769 kg)



100%



360°



Pounds

(Feet)	32 ft. LENGTH			44 ft. LENGTH			56 ft. LENGTH		
	0° OFFSET	15° OFFSET	30° OFFSET	0° OFFSET	15° OFFSET	30° OFFSET	0° OFFSET	15° OFFSET	30° OFFSET
30	9,500 (78)								
35	8,710 (76)	*7,500 (78)		7,320 (77.5)					
40	8,000 (74)	7,070 (75.5)	*5,800 (78)	6,880 (75.5)			5,560 (77)		
45	7,340 (71.5)	6,760 (73.5)	5,690 (76)	6,490 (74)	5,060 (77.5)		5,250 (75.5)		
50	6,740 (69.5)	6,470 (71.5)	5,440 (73.5)	6,140 (72)	4,840 (75.5)	*3,770 (78)	4,970 (73.5)	3,900 (78)	
55	6,190 (67)	6,210 (69)	5,210 (71.5)	5,820 (69.5)	4,650 (73.5)	3,600 (76)	4,710 (72)	3,740 (76)	
60	5,500 (65)	5,970 (67)	5,010 (69)	5,530 (67.5)	4,460 (71.5)	3,450 (74)	4,480 (70)	3,600 (74.5)	2,650 (78)
65	4,850 (62.5)	5,280 (64.5)	4,820 (67)	5,220 (65.5)	4,300 (69.5)	3,320 (72)	4,270 (68)	3,410 (72.5)	2,540 (76)
70	4,270 (60)	4,670 (62)	4,650 (64.5)	4,640 (63.5)	4,140 (67.5)	3,190 (70)	4,070 (66.5)	3,220 (70.5)	2,430 (74)
75	3,740 (57.5)	4,110 (59.5)	4,420 (62)	4,110 (61.5)	3,940 (65)	3,070 (67.5)	3,890 (64.5)	3,050 (68.5)	2,340 (72.5)
80	3,260 (55)	3,600 (57)	3,870 (59.5)	3,640 (59)	3,750 (63)	2,970 (65.5)	3,720 (62.5)	2,890 (66.5)	2,250 (70)
85	2,810 (52.5)	3,120 (54.5)	3,190 (57)	3,200 (57)	3,570 (61)	2,870 (63)	3,530 (60.5)	2,750 (64.5)	2,170 (68)
90	2,410 (49.5)	2,590 (52)	2,590 (54)	2,800 (54.5)	3,030 (58.5)	2,780 (60.5)	3,130 (58.5)	2,620 (62.5)	2,100 (66)
95	2,030 (47)	2,060 (49)	2,060 (51)	2,430 (52)	2,510 (56)	2,510 (58)	2,760 (56.5)	2,500 (60.5)	2,030 (64)
100	1,600 (43.5)	1,600 (46)	1,600 (48)	2,050 (49.5)	2,050 (53.5)	2,050 (55.5)	2,420 (54.5)	2,390 (58.5)	1,970 (61.5)
105	1,180 (40.5)	1,180 (42.5)	1,180 (45)	1,630 (47)	1,630 (51)	1,630 (52.5)	2,110 (52)	2,150 (56)	1,910 (59.5)
110				1,260 (44)	1,260 (48.5)	1,260 (50)	1,750 (49.5)	1,750 (54)	1,750 (57)
115							1,390 (47.5)	1,390 (51.5)	1,390 (54)
120							1,070 (45)	1,070 (48.5)	1,070 (51.5)

NOTE: () Boom angles are in degrees.
*This capacity is based upon maximum boom angle.

A6-829-009707B